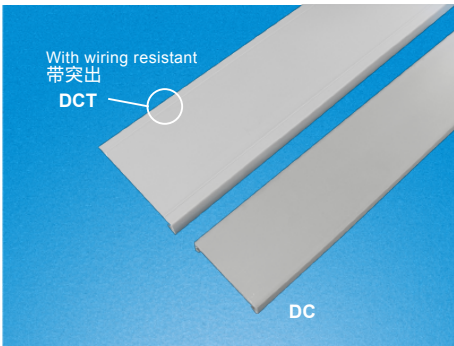


RCCN 日成DC型环保线槽盖 Duct Covers



产品材质:采用低卤素硬质PVC料制成,环保无污染,不含铅等有毒物。
 产品认证:欧洲环保RoHS,REACH。
 防火等级:UL94V-0,低烟微卤,遇火不燃烧,防火性及绝缘性特佳。
 颜色:灰色.白色.蓝色.黑色(可定制其它颜色,有起定量要求)。

说明:DCT槽盖顶部有突出标识,可与日成所有系列底组合配套。

推荐:灰色为常规库存产品,其它颜色有起订量要求。

Certificates:UL:E306674 CE:EN50085 RoHS,REACH.

Made of Low halogen, lead free and enviroment-friendly rigid PVC

UL Recognized continuous use temperature: 50°C (122°F)

UL94 Flammability Rating of V-0

Provided with mounting holes

Available color:gray.white.blue.black and other special colors

Work Temperature:-40°C to 65°C



DC



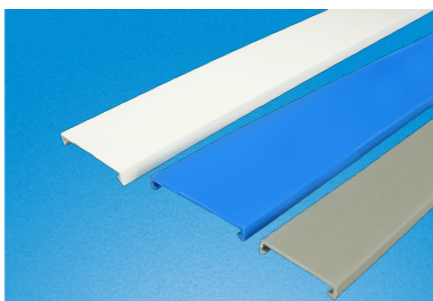
DCT

单位/Unit:mm

| RAL7030 | RAL9022 | RAL7047 | RAL9016 | RAL5015 | RAL9005 | 宽 Wide W | 适合线槽规格 Suitable wiring duct Specifications | 标准长度 Standard Length |
|------------|-----------------------|-------------------|-------------|------------|-------------|----------------|--|--|
| 灰色 Gray | 浅灰色Gray Light gray | 灰白色 Gray white | 白色 White | 蓝色 Blue | 黑色 Black | | | |
| DC-15G | DC-15G/9022 | DC-15G/7047 | DC-15W | DC-15E | DC-15B | 15 | 15宽线槽 | 每支 2米 含槽底槽盖 |
| DC-16G | DC-16G/9022 | DC-16G/7047 | DC-16W | DC-16E | DC-16B | 16 | 16宽线槽 | |
| DC-20G | DC-20G/9022 | DC-20G/7047 | DC-20W | DC-20E | DC-20B | 20 | 20宽线槽 | |
| DC-22G | DC-22G/9022 | DC-22G/7047 | DC-22W | DC-22E | DC-22B | 22 | 22宽线槽 | |
| DC-25G | DC-25G/9022 | DC-25G/7047 | DC-25W | DC-25E | DC-25B | 25 | 25宽线槽 | |
| DC-30G | DC-30G/9022 | DC-30G/7047 | DC-30W | DC-30E | DC-30B | 30 | 30宽线槽 | |
| DC-33G | DC-33G/9022 | DC-33G/7047 | DC-33W | DC-33E | DC-33B | 33 | 33宽线槽 | |
| DC-35G | DC-35G/9022 | DC-35G/7047 | DC-35W | DC-35E | DC-35B | 35 | 35宽线槽 | |
| DC-40G | DC-40G/9022 | DC-40G/7047 | DC-40W | DC-40E | DC-40B | 40 | 40宽线槽 | |
| DC-45G | DC-45G/9022 | DC-45G/7047 | DC-45W | DC-45E | DC-45B | 45 | 45宽线槽 | |
| DC-50G | DC-50G/9022 | DC-50G/7047 | DC-50W | DC-50E | DC-50B | 50 | 50宽线槽 | Pcs/Branch 2M Including truning and lids |
| DC-55G | DC-55G/9022 | DC-55G/7047 | DC-55W | DC-55E | DC-55B | 55 | 55宽线槽 | |
| DC-60G | DC-60G/9022 | DC-60G/7047 | DC-60W | DC-60E | DC-60B | 60 | 60宽线槽 | |
| DC-65G | DC-65G/9022 | DC-65G/7047 | DC-65W | DC-65E | DC-65B | 65 | 65宽线槽 | |
| DC-70G | DC-70G/9022 | DC-70G/7047 | DC-70W | DC-70E | DC-70B | 70 | 70宽线槽 | |
| DC-72G | DC-72G/9022 | DC-72G/7047 | DC-72W | DC-72E | DC-72B | 72 | 72宽线槽 | |
| DC-75G | DC-75G/9022 | DC-75G/7047 | DC-75W | DC-75E | DC-75B | 75 | 75宽线槽 | |
| DC-80G | DC-80G/9022 | DC-80G/7047 | DC-80W | DC-80E | DC-80B | 80 | 80宽线槽 | |
| DC-100G | DC-100G/9022 | DC-100G/7047 | DC-100W | DC-100E | DC-100B | 100 | 100宽线槽 | |
| DC-110G | DC-110G/9022 | DC-110G/7047 | DC-110W | DC-110E | DC-110B | 110 | 110宽线槽 | |
| DC-120G | DC-120G/9022 | DC-120G/7047 | DC-120W | DC-120E | DC-120B | 120 | 120宽线槽 | |
| DC-125G | DC-125G/9022 | DC-125G/7047 | DC-125W | DC-125E | DC-125B | 125 | 125宽线槽 | |
| DC-140G | DC-140G/9022 | DC-140G/7047 | DC-140W | DC-140E | DC-140B | 140 | 140宽线槽 | |
| DC-150G | DC-150G/9022 | DC-150G/7047 | DC-150W | DC-150E | DC-150B | 150 | 150宽线槽 | |
| DC-200G | DC-200G/9022 | DC-200G/7047 | DC-200W | DC-200E | DC-200B | 200 | 200宽线槽 | |

| 型号 Item No. | | | | | | 宽 Wide W | 适合线槽规格 Suitable wiring duct Specifications | 标准长度 Standard Length |
|-------------|--------------------------|--------------------------|-------------|------------|-------------|----------------|--|----------------------------------|
| 灰色 Gray | 浅灰色RAL9022 Light gray | 灰白色RAL7047 Gray white | 白色 White | 蓝色 Blue | 黑色 Black | | | |
| DC-25T | DC-25T/9022 | DC-25T/7047 | DC-25TW | DC-25TE | DC-25TB | 25 | 25宽线槽 | 每支 2米 Pcs/Branch 2M |
| DC-40T | DC-40T/9022 | DC-40T/7047 | DC-40TW | DC-40TE | DC-40TB | 40 | 40宽线槽 | |
| DC-60T | DC-60T/9022 | DC-60T/7047 | DC-60TW | DC-60TE | DC-60TB | 60 | 60宽线槽 | |
| DC-80T | DC-80T/9022 | DC-80T/7047 | DC-80TW | DC-80TE | DC-80TB | 80 | 80宽线槽 | |
| DC-100T | DC-100T/9022 | DC-100T/7047 | DC-100TW | DC-100TE | DC-100TB | 100 | 100宽线槽 | |

RCCN 日成DC-HF型耐高温无卤线槽盖 Halogen Free Duct Covers



产品材质:采用无卤硬质塑料制成,环保无污染,不含铅等有毒物。
 工作温度:静态-40°C持续高温至110°C。
 Material:zero halogen, lead free and enviroment-friendly rigid PVC。
 Work temperature:-40°C to 110 °C

| 型号 Item No. | | | 宽 Wide W | 适合线槽规格 Suitable wiring duct Specifications | 标准长度 Standard Length |
|-------------|-------------------|------------|----------------|--|------------------------------|
| 灰色 Gray | 乳白色 Milk white | 蓝色 Blue | | | |
| DC-20HF | DC-20HFW | DC-20HFE | 20 | 20宽线槽 | Pcs/Branch 2M 每支2米 |
| DC-25HF | DC-25HFW | DC-25HFE | 25 | 25宽线槽 | |
| DC-30HF | DC-30HFW | DC-30HFE | 30 | 30宽线槽 | |
| DC-33HF | DC-33HFW | DC-33HFE | 33 | 33宽线槽 | |
| DC-35HF | DC-35HFW | DC-35HFE | 35 | 35宽线槽 | |
| DC-40HF | DC-40HFW | DC-40HFE | 40 | 40宽线槽 | |
| DC-50HF | DC-50HFW | DC-50HFE | 50 | 50宽线槽 | |
| DC-60HF | DC-60HFW | DC-60HFE | 60 | 60宽线槽 | |
| DC-75HF | DC-75HFW | DC-75HFE | 75 | 75宽线槽 | |
| DC-80HF | DC-80HFW | DC-80HFE | 80 | 80宽线槽 | |
| DC-100HF | DC-100HFW | DC-100HFE | 100 | 100宽线槽 | |
| DC-120HF | DC-120HFW | DC-120HFE | 120 | 120宽线槽 | |